



# 2025 PSO Climate Change Accountability Report

School District 38  
(Richmond)

# Acknowledgement of Territory



The Richmond School District acknowledges and thanks the First Peoples of the hə́ŋqəmíə́m language group on whose traditional and unceded territories we teach, learn and live.

# PART 1. Legislative Reporting Requirements

## DECLARATION STATEMENT:

This PSO (public sector organization) Climate Change Accountability Report for the period January 1, 2025 to December 31, 2025 summarizes our greenhouse gas (GHG) emissions profile, the total offsets to reach net-zero emissions, the actions we have taken in 2025 to minimize our GHG emissions, and our plans to continue reducing emissions in 2026 and beyond.

By June 30, 2026, School District 38's final 2025 *Climate Change Accountability Report* will be posted to our website at [www.sd38.bc.ca](http://www.sd38.bc.ca).

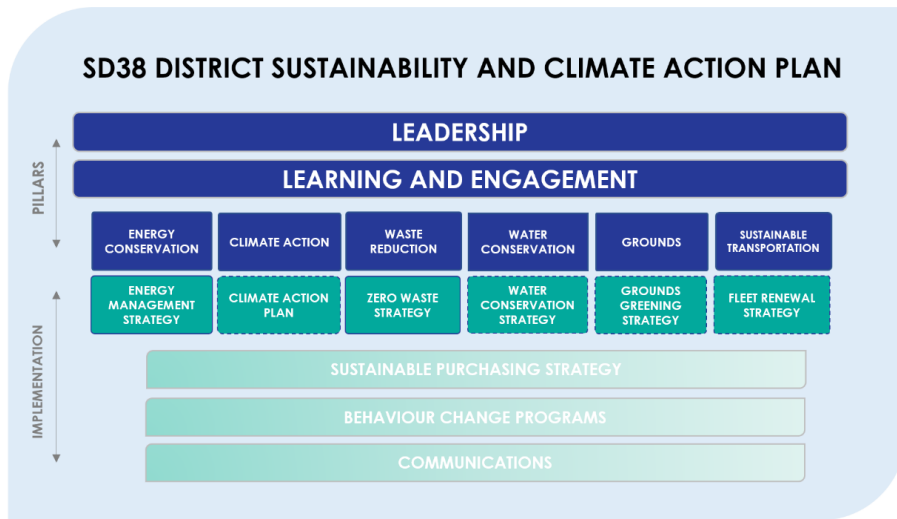
## EMISSION REDUCTIONS: ACTIONS & PLANS

At its Public Meeting on December 15, 2021, the Richmond Board of Education adopted its new [District Sustainability & Climate Action Plan](#) (DSCAP). The DSCAP is the strategy the Richmond School District is following to reach our targets of a 50% reduction in greenhouse gas emissions from building sources, and a 40% reduction from mobile sources by 2030 and net zero GHG emissions by 2050, based on the 2007 baseline.

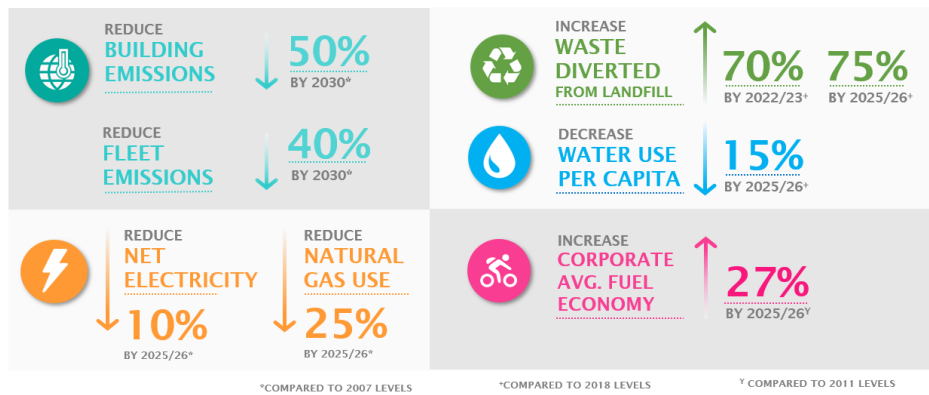
The DSCAP itself has nine Pillars that guide how the Richmond School District links our core mandate of education with sustainability and climate action. The genesis of these pillars was from the active leadership in environmental stewardship dating back to 2011, and have a number of associated Board policies, regulations, and guidelines.



How the pillars interact is shown in the following:



For the 2021-26 period covered by the DSCAP, a summary of overall objectives is as follows:



## Overview

In 2025 calendar year, SD38 achieved a 32% reduction in building and a 20% reduction in fleet emissions from the baseline in 2007. Both metrics are showing progress toward the 2030 targets.

### Richmond School District 38 (SD38) GHG Emissions [tonnes CO<sub>2</sub>e] Comparison in 2024 & 2025

Types of emissions	2024	2025	% Change
<b>A. Stationary Sources - Buildings [tCO<sub>2</sub>e]</b>	5,046	5,006	-0.80%
<b>B. Mobile Sources - Fleet [tCO<sub>2</sub>e]</b>	436	420	-3.68%
<b>C. Office Paper [tCO<sub>2</sub>e]</b>	249	233	-6.47%
<b>D. Fugitive Emissions <sup>1</sup>[tCO<sub>2</sub>e]</b>	106	446	+322.17%
<b><u>Total [tCO<sub>2</sub>e]</u></b>	<b><u>5,837</u></b>	<b><u>6,105</u></b>	<b><u>+4.59%</u></b>

The total emissions of Richmond School District 38 (SD38) increased in 2025.

A continued reduction in stationary source emissions was achieved. However, updated emission factors under the “2025 B.C. Best Practices Methodology for Quantifying Greenhouse Gas Emissions” (B.C. Ministry of Energy and Climate Solutions) caused electricity-related emissions to increase threefold. As a result, the overall reduction in stationary emissions was lower than expected. Emissions from mobile sources and office paper use also declined.

The 4.59% increase in total emissions in 2025 largely resulted from fugitive emissions. The application of the updated calculation methodology under the “2025 B.C. Best Practices Methodology for Quantifying Greenhouse Gas Emissions,” resulted in higher reported fugitive emissions. Further details will be included in *Part 2*.

#### A. Stationary Sources - Buildings

In the 2025 calendar year, SD38 continued to prioritize greenhouse gas (GHG) reduction initiatives targeting its largest source of emissions: buildings.

This focus contributed to a reduction in direct fuel combustion emissions (natural gas, diesel, and propane), despite a slight increase in emissions from purchased energy (electricity consumption). Building-related emissions from schools and other District facilities accounted for 84.17% of total GHG emissions in 2025, compared to 88.78% in 2024 (Figures in *Appendix A*).

---

<sup>1</sup> Fugitive emissions are attributed to the loss of GHGs, such as hydrofluorocarbons (HFCs) from refrigeration equipment into the atmosphere. Refrigeration equipment means any equipment that employs the expansion and compression of refrigerants, regardless of its application. This includes refrigerators, heat pumps, air conditioners, and similar devices.

The following is a list of example projects, measures, and contributing factors implemented in 2025 calendar year that contributed to the GHG emissions reduction:

- Boiler replacement projects with high-efficiency condensing boilers at Richmond Secondary School (513.912 GJ/year natural gas saved)
- Direct Digital Control (DDC) upgrades at Errington, Kingswood, McNeely, Talmey, and Thompson Elementary Schools by the end of 2024 (2,800 GJ/year natural gas saved)
- Energy-saving behavioural campaign on thermal comfort to reduce natural gas consumption in 9 sites (6 schools and 3 offices)
- LED upgrades at Blundell Elementary, Brighthouse Elementary, and Palmer Secondary in 2025 (285,269 kWh electricity saved)

2025 Calendar Building Energy and GHG Emission Performance Analysis:

- **Natural Gas:** Natural gas consumption and GHG emissions declined significantly, primarily due to upgrades to Direct Digital Control (DDC) systems and the replacement of HVAC equipment with high-efficiency models.
- **Propane:** Propane-fired HVAC equipment is used solely in existing portable classrooms. All new modular classroom additions have been equipped with electric heat pumps to reduce GHG emissions. Propane consumption did not change significantly from 2024 to 2025, as usage is based on demand (Figures *in Appendix C*).
- **Diesel:** Diesel is used on a demand basis to fuel backup generators at District facilities. In 2025, re-fuelling was required at several sites, leading to a slight increase in diesel purchases compared to 2024 (Figures *in Appendix C*). What about diesel vehicles?
- **Electricity:** Electricity consumption at District sites increased by 394,400 kWh in 2025. This increase is attributed to several initiatives, including electric vehicle (EV) charging infrastructure upgrades, multiple modular classroom additions, and the development of new daycare facilities, including:
  - ❖ Five classroom modular addition at Cook Elementary,
  - ❖ Six classroom modular addition at Brighthouse Elementary,
  - ❖ Nine classroom modular addition at Tomsett Elementary,
  - ❖ Six classroom modular addition at Talmey Elementary,
  - ❖ Two modular childcare facilities at Spul'u'kwuks and Garden City
- As a result of ongoing expansions, SD38's total occupied floor area increased from 277,530 m<sup>2</sup> in 2024 to 285,217 m<sup>2</sup> in 2025 (Figures *in Appendix E*). All portable classrooms, modular additions, and daycare facilities are connected to the main building electrical supply, with most heating demand provided by heat pumps; however, portable classrooms continue to rely on propane fired heating systems. Notably, several portables have been closed

following the modular additions at Cook, Brighthouse, Tomsett, and Talmey, which may reduce reliance on propane-based heating over time.

- The carbon emissions of electricity consumption increased from 141 tCO<sub>2</sub>e in 2024 to 428 tCO<sub>2</sub>e in 2025. This increase resulted from a revision in the emission factor for “Electricity – Integrated Grid BC Hydro” in the 2025 reporting year, which was tripled compared to 2024.

## **B. Mobile Sources - Fleet**

The use of fossil fuels to power SD38’s fleet vehicles, including maintenance vehicles and school buses, contribute to fleet emissions. The fleet accounted for 4.6% of SD38’s overall emissions in 2025 (Figures in *Appendix A*).

To reduce the fleet emissions, there is a two-pronged approach:

- Behavioural – providing training and planning resources to all employees that drive District vehicles on route planning and economic driving techniques.
- Technical – as existing vehicles reach a point where maintenance cost is greater than the cost of replacement, they will be retired in favour of electric vehicles where feasible or with a more fuel-efficient version.

In 2025, Richmond School District acquired 1 gasoline pickup truck, 1 diesel pickup truck, and 2 electric buses. As a result, mobile emissions decreased from 436 tCO<sub>2</sub>e in 2024 to 420 tCO<sub>2</sub>e in 2025 (Figures in *Appendix F*), largely due to an increasing shift from diesel within the vehicle fleet.

In addition, a decline in student enrolment, from 23,307 in 2024 to 22,987 in 2025, representing a 1.37% decrease, led to a corresponding reduction in school bus services (Figures in *Appendix F*). This marks the first decrease in student enrolment since 2020, following four consecutive years of growth.

## **C. Paper Consumption**

Office paper supply emissions are indirect and result from the District’s use of office paper. In 2025, paper consumption accounted for 3.9% of the District’s total GHG emissions, decreasing from 249 tCO<sub>2</sub>e in 2024 to 233 tCO<sub>2</sub>e in 2025 (Figures in *Appendix G*). Similar to mobile sources, the decline in student enrolment contributed to a reduction in paper usage across the District in 2025 (Figures in *Appendix F*).

In addition, SD38’s procurement team participated in training with the Canadian Collaboration for Sustainable Procurement (CCSP) in 2024. Following this training, the purchase of “100% recycled office paper” increased in 2025, reaching 1.7% of total paper consumption after several years of no usage. This represents the highest level of “100% recycled office paper” use since 2020.

## **D. Fugitive Emissions**

2025 marked the second year that SD38 reported fugitive emissions. Fugitive emissions accounted for 446 tCO<sub>2</sub>e, representing 7.3% of overall District emissions (Figures in *Appendix A*). SD38 estimated emissions from refrigeration systems associated with the provincial Food Infrastructure Program, as well as ventilation equipment across more than 50 sites, using the “General estimated method”, the estimation method outlined in the “2025 B.C. Best Practices Methodology for Quantifying Greenhouse Gas Emissions.”

Fugitive emissions increased fourfold from 106 tCO<sub>2</sub>e in 2024 to 446 tCO<sub>2</sub>e in 2025. This increase resulted from a change in the calculation formula applied under the “General estimated method” of the “Asset group-based methodology” provided by the Climate Solution Division (formerly the Climate Action Secretariat). The updated methodology applies different refrigerant charge size assumptions than those used in 2024. Further details will be included in *Part 2*.

## **E. Plans to Continue Reducing Greenhouse Gas Emissions**

In 2026, we are continuing with the District’s comprehensive energy conservation program and have a number of energy efficiency projects slated for 2025/26 including:

- Boiler upgrade projects to high-efficiency condensing boilers at McNair Secondary.
- We will continue to explore energy savings opportunities from the traditional Continuous Optimization (C-Op) projects. The sites selected for investigation in 2026 are Errington, Gilmore, Hamilton, Lee, McKinney, Mitchell Elem, Mitchell Adult Centre, Spul’u’kwuks, Tait, Thompson.
- LED upgrades to be completed at Garden City Elementary, Quilchena Elementary, and Boyd Secondary in early-2026 (149,988 kWh/year electricity saved).
- LED upgrades planned at Kidd Elementary, Gilmore Elementary, and City Centre Elementary School in mid-2026, with completion in late 2026.
- Rooftop Units (RTU) replacement project to Dual Fuel RTUs at Facilities Services Centre, City Centre Elementary School (8671 Odlin Crescent), and McNair Secondary.
- Continuous Optimization (C-Op) Lite projects for 25 schools for global Holiday Schedules<sup>2</sup> and global optimum starts<sup>3</sup> (441,199 kWh/year electricity and 5,180.7 GJ/year natural gas saved).

## **F. Potential increase in energy demand**

- New School Construction: Diefenbaker Elementary (school replacement for the old Diefenbaker Elementary at the nearby site). During construction, site energy usage is

---

<sup>2</sup> Shut down heating system during summer break when schools are not occupied.

<sup>3</sup> Use less energy to quickly warm up schools during winter season before schools start.

expected to increase. Once complete, the new building is anticipated to shift its energy profile, with increased electrical consumption due to heat pump systems and reduced reliance on natural gas, resulting in a meaningful reduction in greenhouse gas emissions.

- New School Acquisition: City Centre Elementary School (8671 Odlin Crescent)
- Aging Infrastructure: HVAC systems, building envelope, and control systems experience wear and degradation, which reduces their efficiency and increases energy consumption over time.
- Climate Change: extreme temperatures, including both hotter summers and colder winters, increasing demand for cooling and heating and causing HVAC systems in schools to operate longer and at higher capacity, thereby raising overall energy consumption.

## 2025 GHG EMISSIONS AND OFFSETS SUMMARY TABLE

<b>Richmond School District 38's 2025 GHG Emissions and Offsets Summary</b>	
<b>GHG emissions for the period January 1 - December 31, 2025</b>	
Total BioCO <sub>2</sub>	140
Total Emissions (tCO <sub>2</sub> e)	6,263 <sup>4</sup>
Total Offsets (tCO <sub>2</sub> e)	5,968 <sup>5</sup>
<b>Adjustments to Offset Required GHG Emissions Reported in Prior Years</b>	
Total Offsets Adjustment (tCO <sub>2</sub> e)	-73.57
<b>Grand Total Offsets for the 2025 Reporting Year</b>	
Grand Total Offsets to be Retired for 2025 Reporting Year (tCO <sub>2</sub> e)	5,894.43
Offset Investment (\$)	\$ 147,360.75

## RETIREMENT OF OFFSETS:

<sup>4</sup> 6,105 (total emission from the overview table on page 8) + 18.5 (emission from leased property) + 140 (BioCO<sub>2</sub>)

<sup>5</sup> 6,263 – 140 (BioCO<sub>2</sub>) – 155 (emissions from school buses)

In accordance with the requirements of the *Climate Change Accountability Act* and Carbon Neutral Government Regulation, School District 38 (Richmond) (**the Organization**) is responsible for arranging for the retirement of the offsets obligation reported above for the 2025 calendar year, together with any adjustments reported for past calendar years (if applicable). The Organization hereby agrees that, in exchange for the Ministry of Energy and Climate Solutions (**the Ministry**) ensuring that these offsets are retired on the Organization's behalf, the Organization will pay within 30 days, the associated invoice to be issued by the Ministry in an amount equal to \$25 per tonne of offsets retired on its behalf plus GST.

SD38 has been notified by the Clean Government Team of prior-year adjustments (PYAs) related to HFC-404a and HFC-507 for the 2024 reporting year. As a result, SD38's 2024 emissions will be reduced by 73.57 tCO<sub>2</sub>e. This reduction will be applied as a credit toward the carbon offset requirement for the 2025 reporting year and has been reflected in the 2025 GHG Emissions and Offsets Summary.

## PART 2. Public Sector Leadership

### 2A. CLIMATE RISK MANAGEMENT

In March 2019, Richmond City Council declared a climate emergency in response to the urgent call set out by the United Nations' Intergovernmental Panel on Climate Change (IPCC), joining more than 600 cities across the world that have made similar declarations. The City has set the target of reducing GHG emissions in Richmond by 50% by 2030, and net-zero GHG emissions by 2050<sup>6</sup>.

In 2021, SD38 added a Climate Action pillar to our sustainability strategy to emphasize the importance of taking bold and swift action to do our part to mitigate the impacts of climate change. We will do this by reducing our emissions, operating low-carbon, efficient and climate-resilient facilities and schools, and outlining the operational and engagement changes we need to take to meet our climate goals.

We also acknowledge the climate emergency and will develop climate adaptation plans to identify how SD38 can mitigate our climate risks and enhance the resiliency of our facilities and operations. In our schools, climate action also needs to be understood as a social justice issue since climate change will impact marginalized populations the most.

---

<sup>6</sup> <https://www.richmond.ca/sustainability/climate/climateleadership.htm>

Under BC's Carbon Neutral Government Regulation, SD38 is required to track, report and offset greenhouse gas (GHG) emissions each year. As the majority of our emissions come from using natural gas to heat District buildings, reducing building-related emissions is our major priority. Fleet emissions represent a smaller portion of our emissions and are addressed through our Sustainable Transportation Strategy. With the provincial carbon tax scheduled to rise in \$25 per year increments until 2030, reducing our carbon emissions will not only help us mitigate our climate impact but will also result in cost savings for the District.

The impact of climate change increases the following risks for Richmond residents:

- More severe and more frequent flooding
- Increased demand for City drainage and sewage systems
- Loss of critical shoreline ecosystems
- Increased health risks caused by exposure to wildfire smoke
- Increased risk of heat stress and heat stroke
- Increased frequency and severity of summertime water restrictions
- Increased likelihood of wildfires

- *Information via the City of Richmond*

We also aim to provide educational opportunities to staff, educators, and students on climate change and how to take action on climate change, incorporating these important concepts into the curriculum and staff training opportunities.

Between 2021 and 2023, the District conducted Climate Change Risk Assessments at six sites: Talmei Elementary, Byng Elementary, McNair Secondary, Boyd Secondary, Steveston-London Secondary, and the School Board Office.

These sites were selected to represent a cross-section of the District's facility portfolio, including elementary schools, secondary schools, and administrative/support facilities. As typical examples of major facility types within the District, the assessment findings and recommended resilience measures can be more readily adapted and applied to similar facilities across the broader portfolio. Using the localized climate change projections through 2050, each facility was evaluated for actions to improve resiliency, service continuity, and embedding climate change into the Long Range Facilities Plan and District policies and regulations.

## 2B. OTHER SUSTAINABILITY INITIATIVES

The Richmond School District continues to create and support the necessary structures for an integrated, system-wide approach to environmental sustainability through the work of the **Richmond Sustainability Advisory Committee (RSAC)**, comprised of representatives from all stakeholder groups.

- The **RSAC** is a District advisory group made up of stakeholders from across the organization, including students, parents, educators, senior leadership and District staff.

- **Eco Cafés:** These meetings are meant to showcase the good work that Green and Eco Teams do with respect to sustainability and provide opportunities for schools to connect with each other in order to foster additional collaboration.

Meeting quarterly, the Energy and Sustainability Team reports on SD38's progress on its sustainability and climate action goals and solicits feedback on other initiatives that should be considered. Through our 'Eco-Wise' program, we continue to work towards embedding environmental stewardship in the day-to-day operations of the District and to incorporate Environmental Stewardship into the school curriculum and into the delivery of each employee's core mandates. The last RSAC meeting was held in November 2023.

The last Eco Café was held in February 2025 and featured the efforts of Richmond Secondary and Ferris Elementary and their Miyawaki Pocket Forest updates. Of note was the use of a variety of plant and tree species that was informed by First Nations perspectives, as well as species that are indigenous in Oregon state (Cascadia bioregion). It was also fascinating to learn about the work at Grauer Elementary and McNair Secondary. This is to account for a changing climate and the anticipated increase in average temperatures over the next 30 years.

Inspired by the Environmental Stewardship Policy and guided by the DSCAP, multiple sustainability initiatives led by teachers and students have been implemented at schools:

1. **School-based Green and Eco Teams:** through the annual Eco-Wise grants funded by the Energy and Sustainability team, schools would undertake ownership of various sustainability initiatives. A number of activities are undertaken by school-based Green and Eco Teams, including:
  - *Outdoor Learning Space upkeep:* presented to the Facilities and Buildings Committee, this is an initiative to work with school Green and Eco teams to teach them how to maintain these spaces, especially when the teacher who initiated them moves to another school. The intent is to provide continuity of approach culture across schools in maintaining these spaces, as teachers move around, and students graduate.
  - *Energy Wise Network activities:* as part of the Eco-Wise grants, Green and Eco Teams were asked to help with behaviour change campaigns that focus on energy conservation. The Energy-Wise Network is a program, jointly funded by BC Hydro and Fortis BC, that works with participating organizations to promote sustainable behaviours. Activities include Holiday shutdowns (unplugging devices), BuRrrDay (sweater days when we lower the temperature in a school, in coordination with the HVAC team), Litter-less Lunches, and "Dining in the Dark" (turning out the lights).
2. **Green Ambassadors Program:** run in conjunction with the City of Richmond, Green Ambassadors are volunteers who work at large community events to help the community appropriately sort their waste at these events. It has since morphed into a monthly meeting

that is part training, part students presenting on various sustainability topics of interest each month. We present District updates and address student questions about District sustainability initiatives.

3. **Zero Waste Strategy:** We have been implementing a full waste management program comprising District-wide organics and recyclables collection in our schools and administrative buildings.
  - Paper towel is now collected like other organic wastes, all are being separated and diverted from the landfill to become 'class A' compost in all of our facilities.
  - Refundable beverage container collection programs for schools were widely implemented as well.
  - There is a pilot program of "Superfy waste monitoring meters" inside the bins of 3 sites: Facilities Service Centre, School Board Office, and Technology Services Centre. To collect data on the volume of waste generation over time and to provide benchmarking of waste data for different sites.
  - Waste audit at 8 schools (Brighthouse Elementary, Errington Elementary, Ferris Elementary, Steves Elementary, Tomsett Elementary, Cambie Secondary, MacNeil Secondary, and Richmond Secondary) and 3 sites (Facilities Services Centre, Rideau Park Technology Resource Centre, and School Board Office.) Waste audits have provided detailed insights into the waste management situation at various schools and sites. SD38 is currently reviewing all the reports and planning for follow-up and tailored actions.
  - The Friendlier reusable food container pilot program was implemented at Burnett and Cambie Secondary Schools. Friendlier eliminates single-use packaging by providing reusable containers to students and staff who purchase food at the cafeteria during lunch. SD38 received positive feedback from school administrators and students. SD38 is currently reviewing all data regarding the rate of food container reuse and the overall waste diversion rate at the schools. After evaluating the technical results and establishing a sustainable financial model for the food providers at the cafeterias and the schools, SD38 is proceeding with the opportunity to expand the program to the cafeterias of all 10 secondary schools.
4. **Utility Management:** We have Prism Utility Monitoring & Analysis Software (PUMA), a web-based utility monitoring software that provides actionable insights for energy, water and greenhouse gas management across a large portfolio of 54 buildings in our District.

Internal benchmarked energy, paper, and water consumption data have been shared with staff and students to engage them in reducing carbon and water footprint.

## 2C. SUCCESS STORIES

### **Behavioural change program**

**“BuRrr Day” Campaign:** To enhance energy awareness regarding thermal comfort in students' daily lives, SD38 organized a "Sweater Day"-type campaign featuring a friendly school-wide competition. The class with the most students participating by wearing themed sweaters, or the class that decorates themed sweater posters and receives the highest votes (as voted by teachers and students) will win a celebration party with free food. SD38 also conducted pre- and post-campaign surveys alongside the actual behavioural change program.

It also provides a valuable opportunity to promote "*Student Leadership*" and "*Student Learning and Engagement*," which are key pillars of the SD38 District Sustainability and Climate Action Plan, encouraging steps towards sustainable action.

### **Building Systems**

In 2025, SD38 worked on various work and studies to implement carbon emissions reduction across SD38.

**New School Construction:** The new Diefenbaker Elementary School project is currently in construction. SD38 has incorporated electric heat pump heating systems with a natural gas backup system to reduce carbon emissions. The new Diefenbaker Elementary is expected to be significantly greener than the old Diefenbaker Elementary School.

In addition, SD38 is collaborating with BC Hydro to explore opportunities to enhance the energy performance of the new school beyond current building code requirements. This initiative aims to reduce energy consumption and contribute to overall improvements in the District's energy performance. The exploration will consider both financial and technical feasibility.

**Refrigeration Systems and Stationary Space Conditioning Equipment Inventory List:** SD38 has compiled a comprehensive inventory of refrigeration and stationary space conditioning equipment. This inventory is based on records from the Asset Planner and VFA systems. It also includes heat pumps from all modular additions and vehicle climate control systems across the fleet. The completed inventory list was reported to CGRT using the “General Estimated Method” under the “Asset Group–Based Methodology”. This effort has resulted in a robust and complete portfolio of refrigerant-containing equipment owned by SD38.

Furthermore, SD38 conducted site walkthroughs with consultants at Cambie Secondary, Richmond Secondary, Steveston-London Secondary, and the Facilities Services Centre to verify that on-site equipment aligned with existing records. Following the site audits, the consultant provided a refined equipment list to further enhance the accuracy of the inventory. This process was particularly important for the secondary schools, where redundant records were identified and required verification. The inventories for these four sites were reported to CGRT using the “Specific Estimated Method” under the “Asset Group–Based Methodology,” which reduces the fugitive emissions significantly.

As SD38 refined and improved the accuracy of its inventory list, a significant increase in reported fugitive emissions was observed. This increase is primarily attributable to changes in refrigerant charge mass and the calculation methodology under the “General Estimated Method” of the “Asset Group–Based Methodology”. For example, in 2024, a split-type air conditioner (A/C) was categorized as a “*Large Commercial Air Conditioning System*” with a refrigerant charge of 3.41 kg of R-404A. In 2025, the same type of unit was reclassified as “*Commercial A/C and Heat Pumps*” with an assumed charge size of 13 kg of R-410A. This reclassification resulted in a substantial increase in calculated fugitive emissions.

Using Kingswood Elementary as an illustrative case, the site reports 12 rooftop units with auxiliary air-conditioning units, 1 freezer, and 2 refrigerators. With the same quantity of equipment reported in both 2024 and 2025, fugitive emissions increased from 5.06 tCO<sub>2</sub>e in 2024 to 24.00 tCO<sub>2</sub>e in 2025, nearly a five-fold increase, primarily due to methodological and parameter changes rather than physical equipment growth.

The SD38 Energy and Sustainability Team has raised this observation with the Climate Solutions Division and will continue to work with them to better understand the rationale behind these changes and identify any potential improvements for future reporting years.

***Emission corrections for HFC-404a and HFC-507 reported in 2024:*** SD38 has been notified by the Clean Government Team of prior-year adjustments (PYAs) related to HFC-404a and HFC-507 for the 2024 reporting year. As a result, SD38’s 2024 emissions will be reduced by 73.57 tCO<sub>2</sub>e. This reduction will be applied as a credit toward the carbon offset requirement for the 2025 reporting year and has been reflected in the 2025 GHG Emissions and Offsets Summary.

## 2D.CONCLUSION

The Richmond School District continues its efforts to reduce greenhouse gas emissions in keeping with our Strategic Plan. As noted in our District Sustainability and Climate Action Plan, this is an effort that will continue until we have achieved our climate action goals. We are proud of our work to reduce our greenhouse gas emissions to pre-pandemic levels, but recognize further efforts are needed. In collaboration with our District stakeholders and community partners, we look forward to overcoming the challenges ahead.

### Executive Sign-off:



\_\_\_\_\_  
Signature

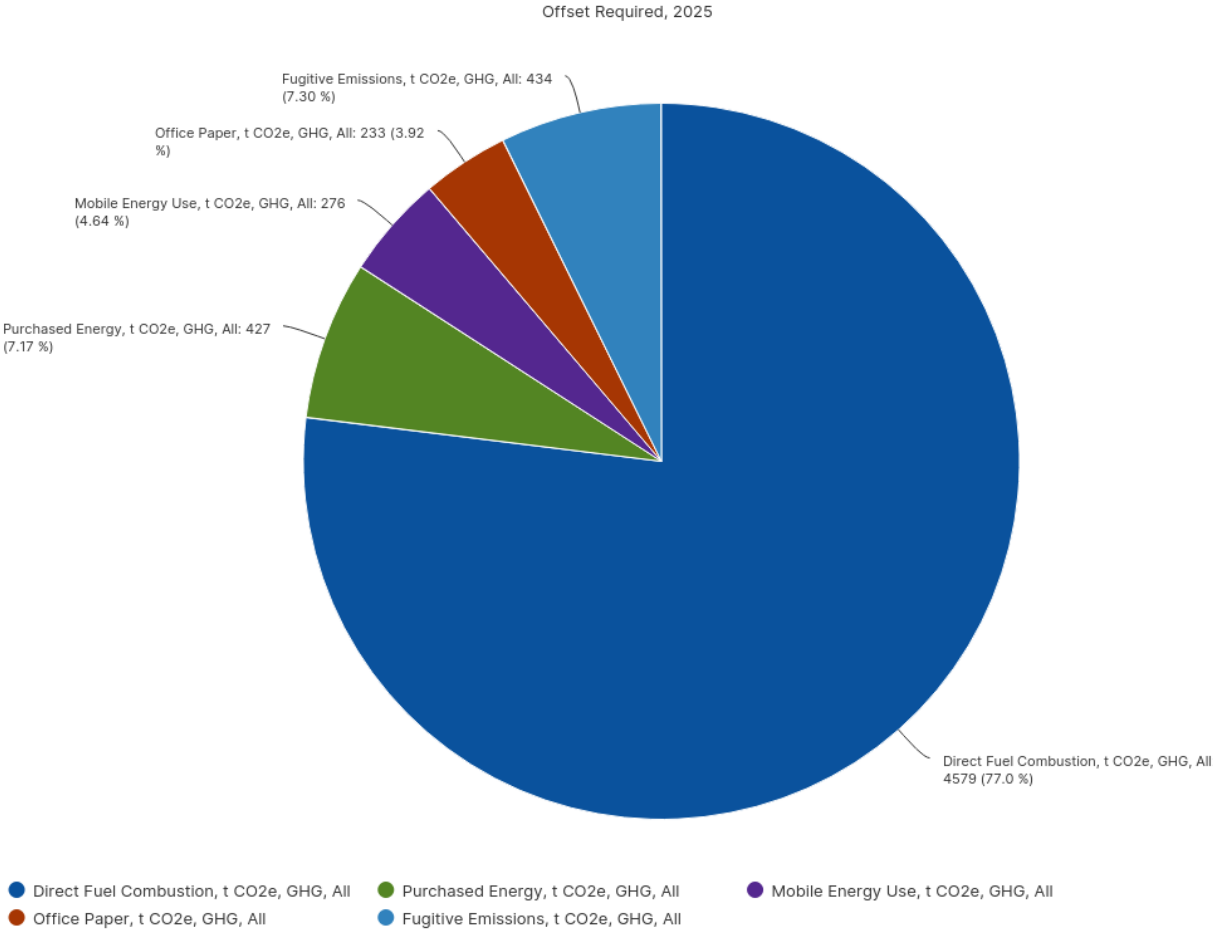
**Cindy Wang**  
Name (please print)

\_\_\_\_\_  
May 27, 2026

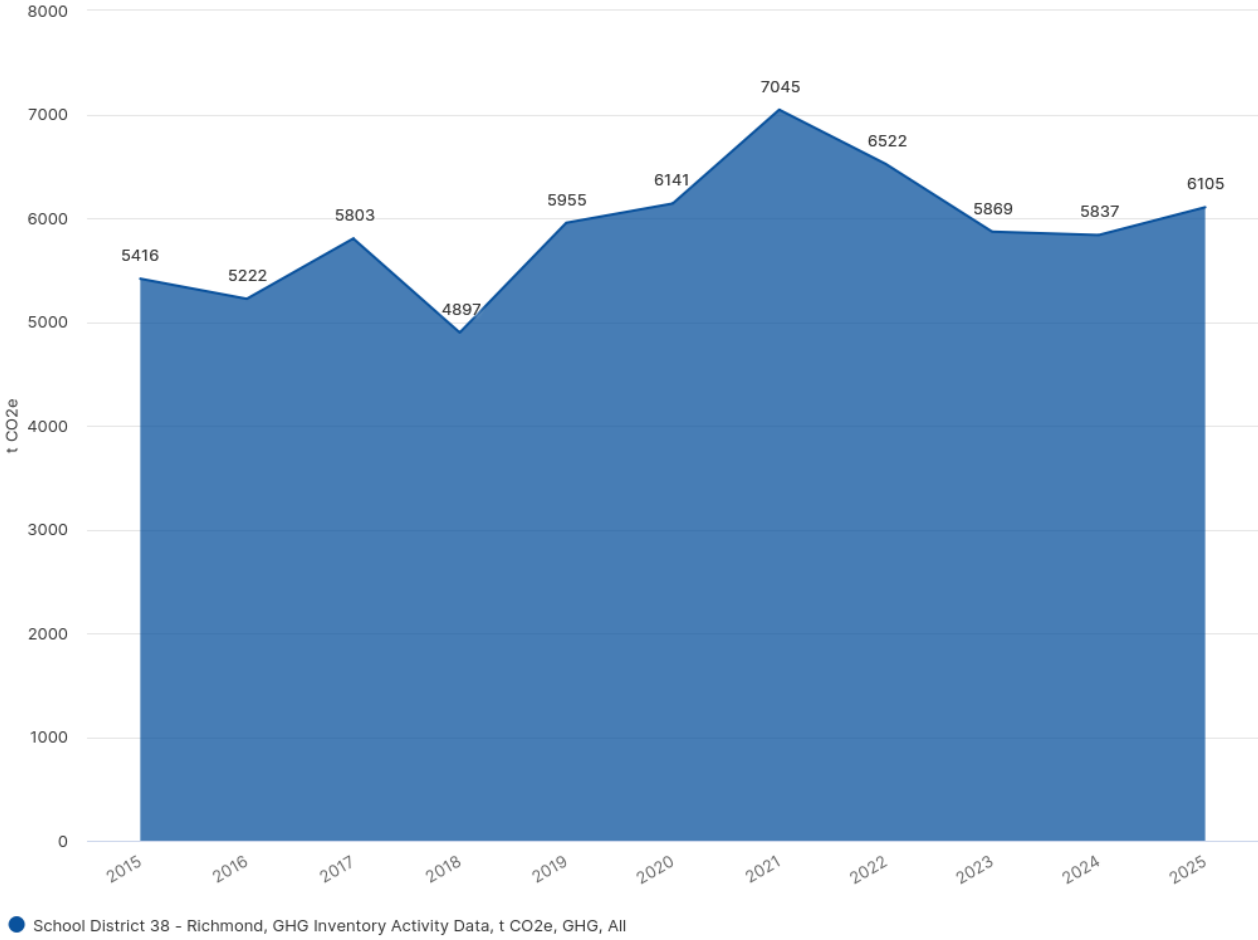
Date

**Secretary Treasurer**  
Title

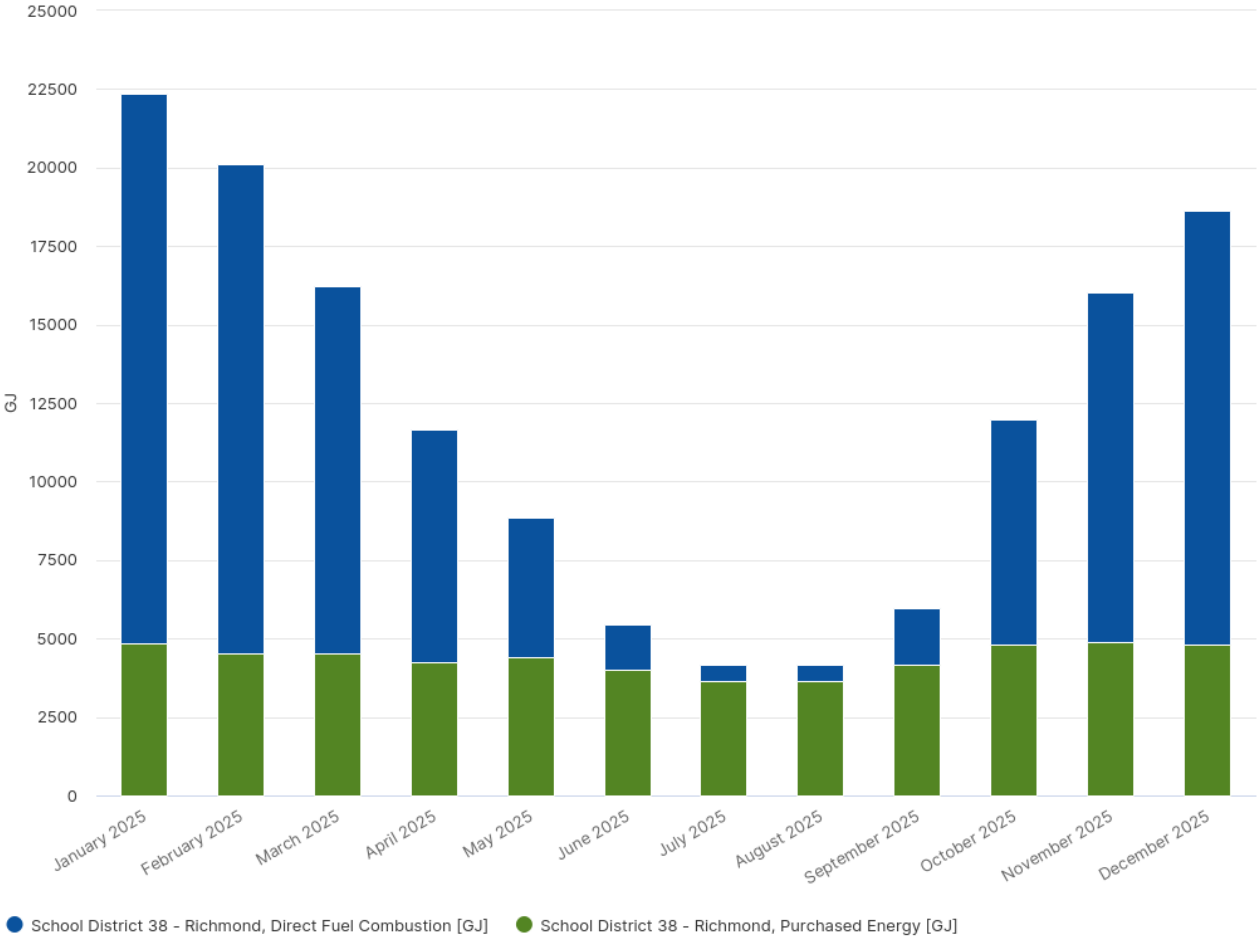
# Appendix A: GHG Emissions Offset required in 2025



# Appendix B: GHG Emissions Trend

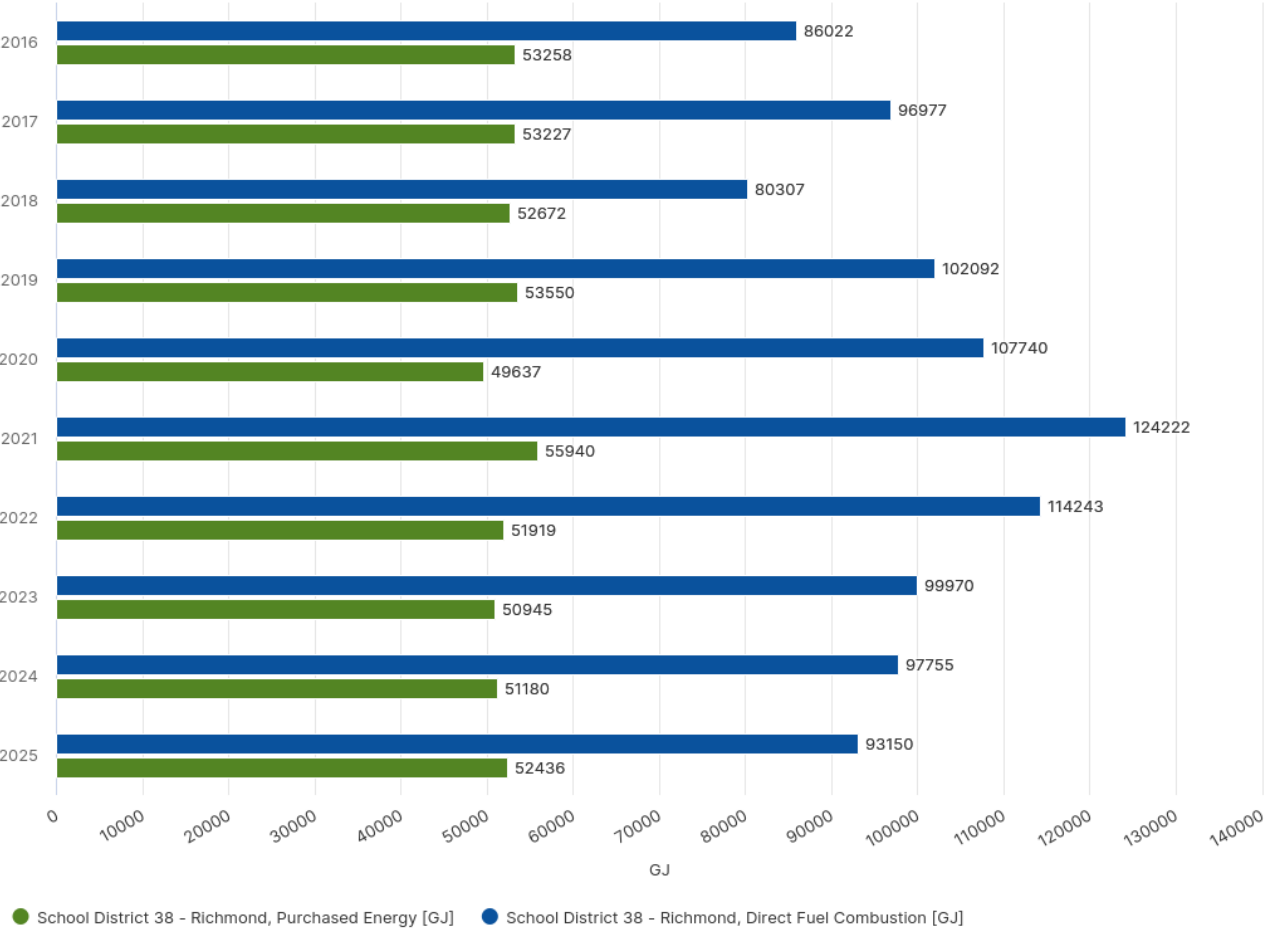


# Appendix C: Stationary Energy Use by Month, 2025

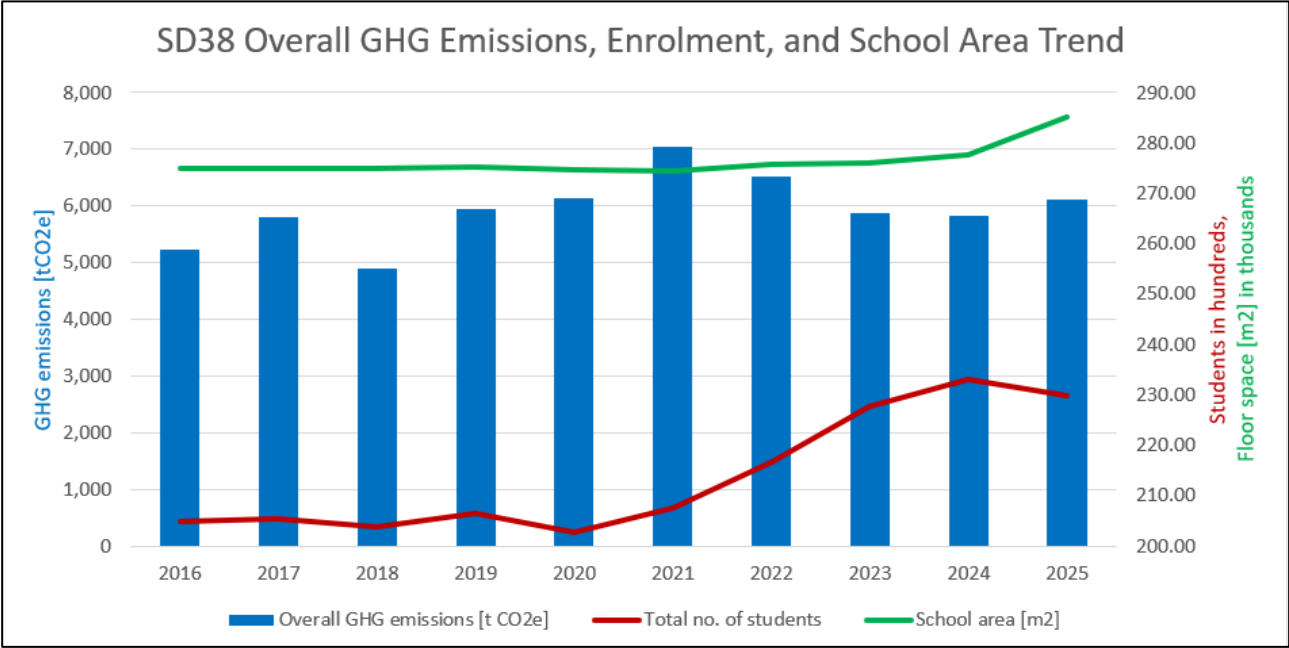


Direct fuel combustion includes natural gas, propane, and diesel consumption; purchased energy includes electricity consumption.

# Appendix D: Station Energy Use Trend

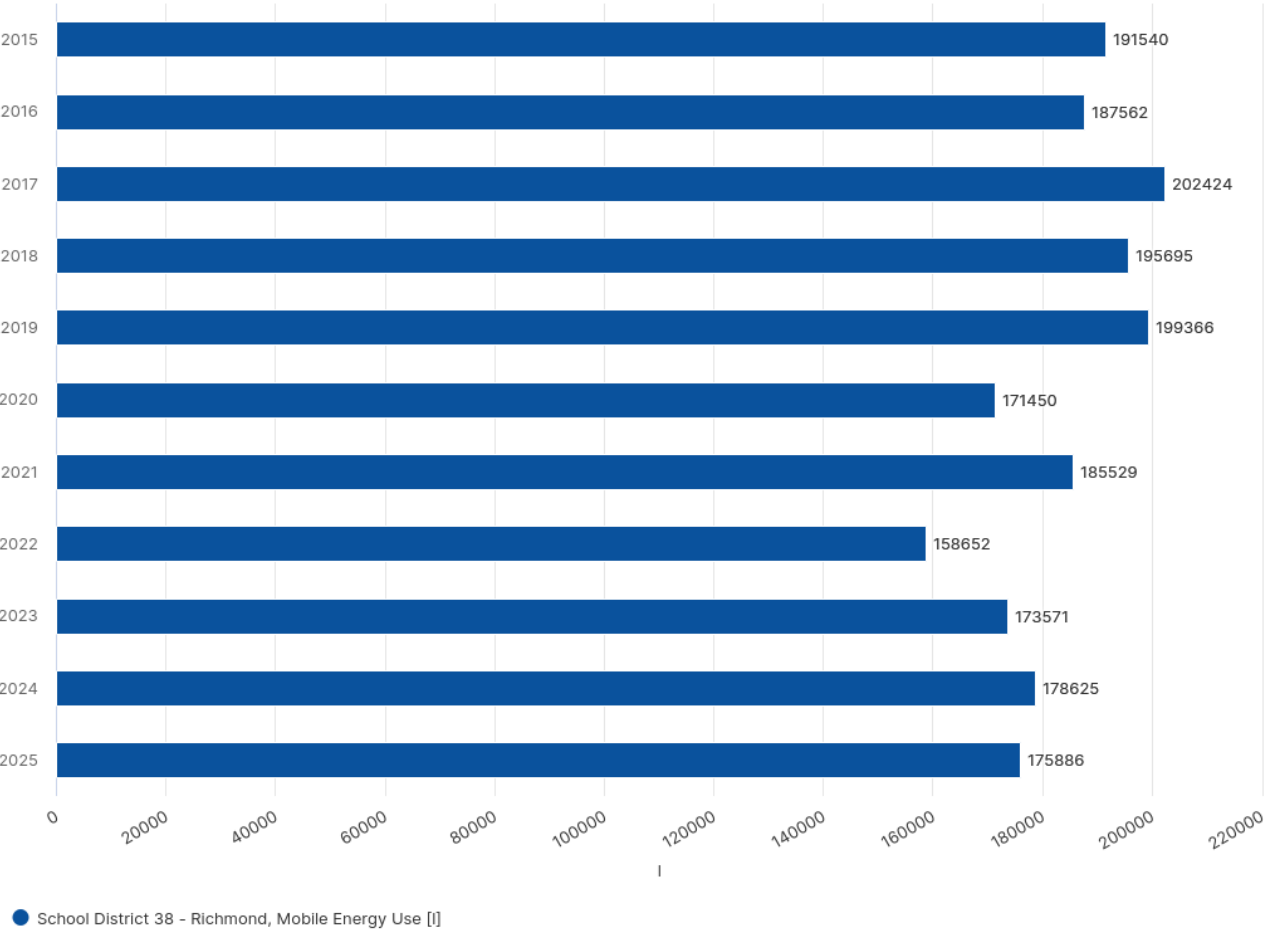


# Appendix E: SD38 Overall GHG Emissions, Enrolment, and School Area Trend

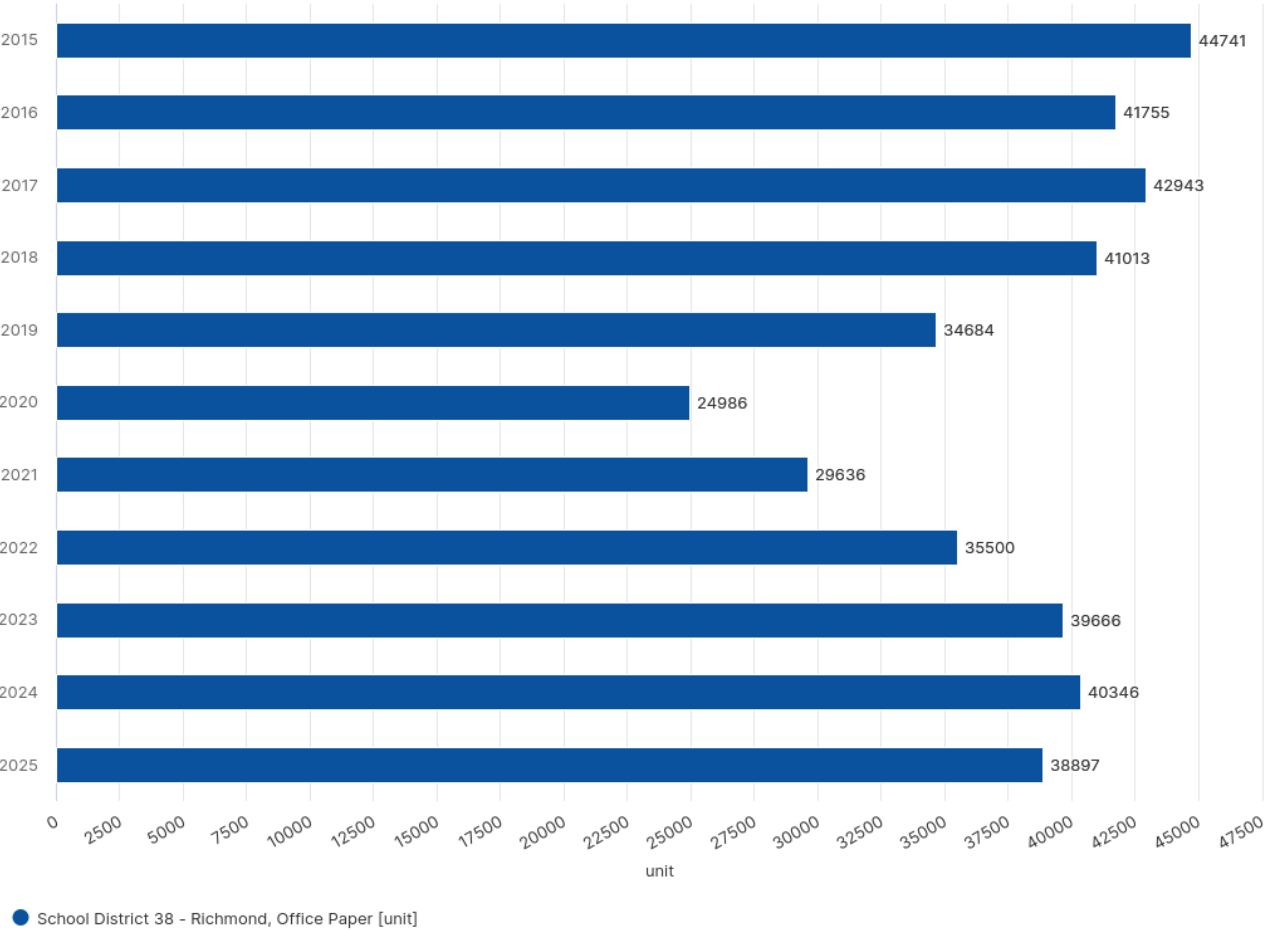


	2016	2017	2018	2019	2020	2021	2022	2023	2024	2025
Overall GHG [t CO2e]	5,222	5,803	4,897	5,955	6,141	7,045	6,522	5,869	5,837	6,106
Total # of students	20,493	20,536	20,377	20,645	20,280	20,750	21,678	22,772	23,307	22,987
School Area [m <sup>2</sup> ]	274,972	274,972	274,972	275,242	274,751	274,335	275,770	276,038	277,530	285,217

# Appendix F: Mobile Energy Use Trend



# Appendix G: Office Paper Use Trend



P.S.: 1 unit = 500-sheet (20lb) all-color paper package in size of 8.5" x 11", 8.5" x 14", and 11" x 17", made by wood fiber and non-wood fiber sources including wheat, eucalyptus, sugarcane, and bamboo