

Board of Education
Special Public Board Agenda

Tuesday, June 24, 2025 – 5:30 pm
1st Floor Boardroom

https://sd38.zoom.us/webinar/register/WN_K-HrAmseRmaCTL8ioKCjjQ

After registering, you will receive a confirmation email containing information about joining the webinar.

The Richmond Board of Education acknowledges and thanks the First Peoples of the hə́ŋqəmiŋəŋ language group on whose traditional and unceded territories we teach, learn and live.

1. Adoption of Agenda

2. Business Arising from Prior Minutes

(a) 2026/27 Five Year Capital Plan

Report from the Secretary Treasurer and Director, Richmond Project Team attached.

3. Correspondence

(a) For information:

Letter from the Board of Education to the Select Standing Committee dated June 4, 2025.

4. Adjournment

Report to the Board of Education (Public)

Date: June 24, 2025

From: Cindy Wang, Secretary Treasurer
Jonathan Ho, Director, Richmond Project Team

Subject: **2026/27 Five-Year Capital Plan (Major Capital)**

RECOMMENDATION

THAT the Board of Education of School District No. 38 (Richmond) approve the amended 2026/27 Five-Year Capital Plan through the adoption of the board resolution for submission to the Ministry of Infrastructure.

STRATEGIC PLAN REFERENCES

Strategic Priority 3: Optimized Facilities & Technology

✓ Goal 2: The district's facilities are well-maintained, equitable, safe, and conducive to learning.

POLICY CONSIDERATIONS

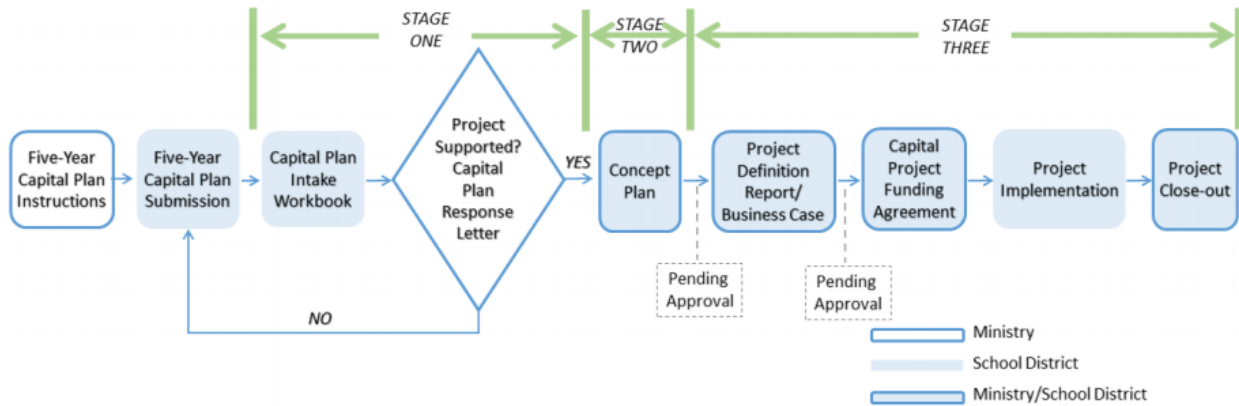
Submitted in accordance with Board Policy 701 and Regulation 701-R - Facilities Planning and Development.

BACKGROUND

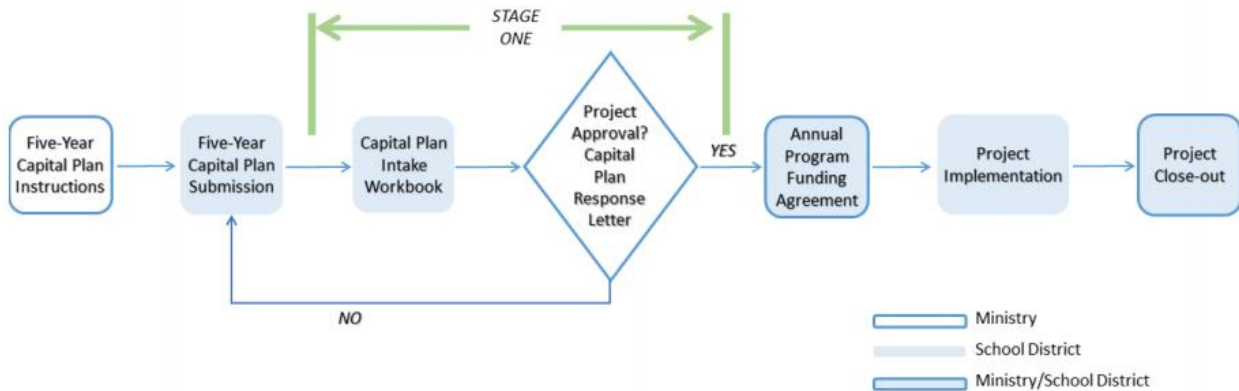
Annual Five-Year Capital Plan submissions from Boards of Education are used by the Ministry of Infrastructure to determine which priority capital projects may be supported in the ministry's Capital Plan for the following fiscal year. The capital plan submissions provide the ministry with important insight into future year capital priorities, which can be used for long term government planning and the determination of potential future capital funding requirements for the system.

In accordance with legislation, a board of education must approve the capital plan by board resolution. Ultimately, the Minister has the authority to either: approve, approve with modifications, or reject a capital plan, as submitted by the board to the ministry. The ministry's capital plan is subject to annual capital funding approval by the Treasury Board of the provincial government.

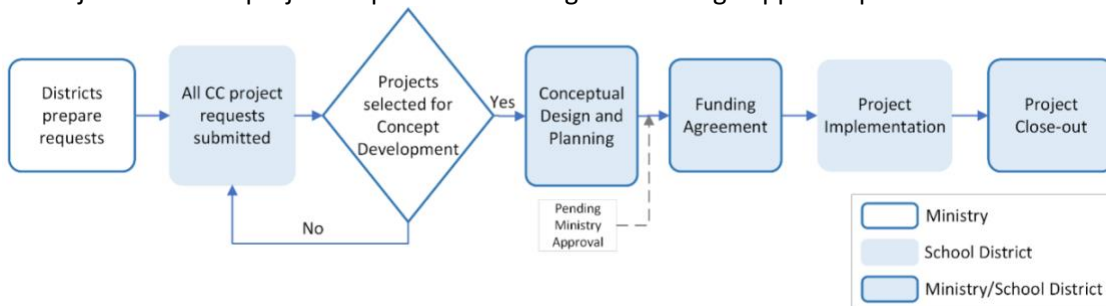
All requests for a Major Capital Program project (SMP, EXP, REP and RDP) or Building Envelope Program (BEP) project will undergo a more extensive three-stage process:



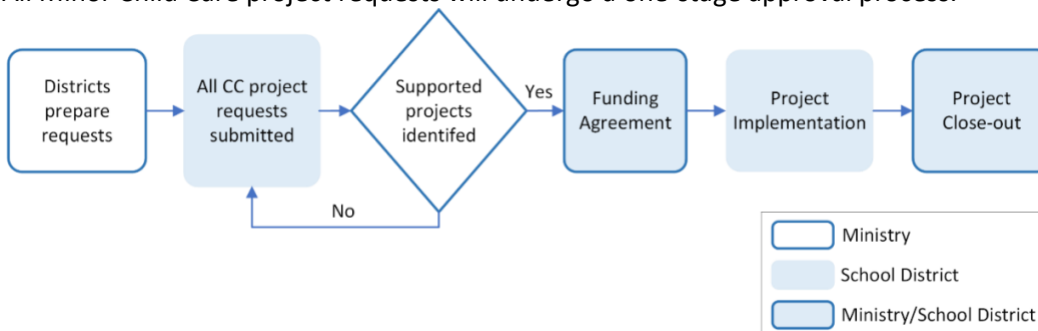
All requests made for a Minor Capital Program project (SEP, CNCP, BUS or PEP) will undergo a one-stage approval process:



All Major Child Care project requests will undergo a two-stage approval process:



All Minor Child Care project requests will undergo a one-stage approval process:



ANALYSIS

The 2026/27 Five-Year Capital Plan of the Richmond School District totals over \$1.06 billion and fall under the following categories:

A. Major Capital Programs

1. Seismic Mitigation Program (SMP)

In keeping with the Richmond Project Team's project delivery mandate, a total of 22 projects have been included in the SMP. The projects listed have been prioritized in accordance with the formula established in the district's Long Range Facilities Plan, as well as the latest guidance from the ministry.

2. School Expansion Program (EXP)

Based on the latest enrolment projections the district requires building additions and new schools. One building addition in the Hamilton area and two new schools will be required in the Richmond City Centre Area.

3. School Replacement Program (REP)

There are no schools in the district inventory which have reached or forecasted to reach the end of their useful life, major structural issues, or accumulation of maintenance needs exceed the cost of building replacement. Therefore, the capital plan does not include school replacement projects.

4. Rural Districts Program (RDP)

This funding is only available for communities with a population of less than 15,000 residents and is not applicable to Richmond School District.

B. Minor Capital Funding Programs

The Ministry of Infrastructure has modified the calendar and deadlines for minor capital submissions. Minor capital plans are due September 30, 2025, and Food Infrastructure Program is due October 1, 2025, for the 2026/27 fiscal year. A separate report will be presented to the board for approval in September 2025.

1. School Enhancement Program (SEP)

SEP projects are investments that will contribute to the safety and function of a school and will extend the life of the existing asset. Current eligible SEP projects include electrical, energy, health and safety, mechanical, and roofing upgrades with budgets between \$100,000 and \$2 Million.

Up to five projects may be submitted annually, and for the capital plan, one dust extraction system replacement, one emergency generator, one boiler replacement, and two multi-site mechanical control systems are included.

2. Carbon Neutral Capital Program (CNCP)

The CNCP is an annual program that is available to provide capital funding specifically for energy efficiency projects that lower school districts' carbon emissions. Available funds are based on

the bank of carbon offsets collected annually by the Province from the district. Three lighting retrofits are included in the capital plan to convert existing lighting to LED (light-emitting diode).

3. Bus Acquisition Program (BUS)

School buses are considered capital assets and any new or replacement buses are funded as part of the school district's annual capital plan submission. For 2026/2027, the capital plan includes two buses that are eligible for replacement with zero emission electric vehicle buses.

4. Playground Equipment Program (PEP)

The PEP is an annual program that is available to provide funding to purchase and install new or replacement playground equipment. Up to three projects may be submitted annually for provincial funding consideration.

5. School Food Infrastructure Program (FIP)

The FIP is a program to assist Boards of Education with creating, improving, or expanding infrastructure for Feeding Future Funds across all communities in British Columbia.

6. Building Envelope Program (BEP)

There are four schools eligible for the Provincial Building Envelope Program. These will be submitted within the Capital Plan and prioritized based on the assessments, provincial prioritization, and synergies with other approved capital projects.

C. Child Care Capital Planning (CC)

Project requests fall into four categories: New Space Integrated (Major), New Space (Major), Conversion (Major), and Conversion (Minor). These projects are classified by dollar value, integration with major capital, creation of new space, or utilization of existing space. The ministry does not require a separate board resolution for childcare projects. Instead, projects are submitted through the ministry's MYCAPS system and prioritized based on community needs and synergies with other approved capital projects.

The ministry has not released opening dates and submission deadlines related to calls for submission for 2026/27 child care capital plans. These dates are anticipated to be confirmed by the ministry at a later time.

CONCLUSION

The 2026/27 Five-Year Capital Plan is built upon the district's Long Range Facilities Plan. It is in alignment with the district strategic priorities and goals, reflecting the priorities of facility needs of Richmond's learning community.

Respectfully submitted,

*Cindy Wang, MSc, CPA-CA
Secretary Treasurer*

Jonathan Ho, M.Eng, MBA, P.Eng, CEM, CBCP, PMP
Director, Richmond Project Team

Attachments:

- Board Resolution – 2026/27 Five-Year Capital Plan (Major Capital)

June 24, 2025

Board Resolution

In accordance with provisions under section 142 (4) of the School Act, the Board of Education of School District No. 38 (Richmond) hereby approves the proposed Five-Year Capital Plan (Major Capital) for 2026/2027 as provided on the Five-Year Capital Plan Summary (Major Capital) for 2026/27 submitted to the Ministry of Infrastructure.

I hereby certify this to be a true copy of the resolution for approval of the proposed Five-Year Capital Plan (Major Capital) for 2026/27 adopted by the Board of Education on this the 24th day of June, 2025.

Cindy Wang, MSc, CPA, CA
Secretary-Treasurer

2026/27 Five-Year Capital Plan Summary (Major Capital)

2026-2027 FIVE-YEAR CAPITAL PLAN

24 June 2025

Richmond School District #38

SEISMIC MITIGATION PROGRAM (SMP) PROJECTS						
Priority	Facility Name	Project Description	Risk Rating	Year (Planning)	Total	Annual Total
1	R.C. Talmey Elementary	Structural Seismic Upgrade - Block 1 (H1) & Block 2 (H3), Substructure Upgrade - Both Blocks	H1	2026	\$43,000,000	\$200,147,800
2	Blundell Elementary	Structural Seismic Upgrade - Block 2 (H1) & Block 3 (H3), Substructure Upgrade - All 3 Blocks	H1	2026	\$31,178,000	
3	Matthew McNair Secondary	Structural Seismic Upgrade - Block 2 (H2) & Block 3 (H1)	H1	2026	\$47,224,000	
4	8671 Odlin Crescent	Structural Seismic Upgrade - Blocks 1 & 2 (H1)	H1	2026	\$22,924,800	
5	Westwind Elementary	Structural Seismic Upgrade - Blocks 1, 2, 3 & 4 (H1), Substructure Upgrade - All 5 Blocks	H1	2026	\$55,821,000	
6	Hugh McRoberts Secondary	Structural Seismic Upgrade - Block 1 (H1)	H1	2027	\$10,838,000	\$147,204,000
7	Steveston-London Secondary	Structural Seismic Upgrade - Block 1 (H1) & Block 3 (H3)	H2	2027	\$83,380,000	
8	John T. Errington Elementary	Structural Seismic Upgrade - Blocks 1 & 2 (H1), Substructure Upgrade - All 3 Blocks	H1	2027	\$52,986,000	
9	James Gilmore Elementary	Structural Seismic Replacement - All 4 Blocks	H1	2028	\$77,950,000	\$151,119,000
	R.M. Grauer Elementary	Structural Seismic Upgrade - Block 2 (H1) & Block 3 (H3), Substructure Upgrade - All 3 Blocks	H1	2028	\$53,660,000	
	Quilchena Elementary	Structural Seismic Upgrade - Blocks 1 & 2 (H1)	H1	2028	\$19,509,000	
12	Jessie Wowk Elementary	Structural Seismic Upgrade (H3) & Substructure Upgrade	H1	2029	\$35,426,000	\$138,615,000
13	Donald E. McKay Elementary	Structural Seismic Upgrade - Blocks 1 & 2 (H1)	H1	2029	\$19,698,000	
14	Walter Lee Elementary	Structural Seismic Upgrade - Blocks 1 & 3 (H1) & Block 2 (H3)	H1	2029	\$28,039,000	
15	James Thompson Elementary	Structural Seismic Upgrade - Blocks 1, 3, 6, 7 & 8 (H1), Block 2 (H3) & Blocks 4 & 5 (H2), Substructure Upgrade - All 9 Blocks	H1	2029	\$55,452,000	
16	R.C. Palmer Secondary	Structural Seismic Upgrade - Block 2 (H1)	H1	2030	\$13,430,000	\$127,330,000
17	Thomas Kidd Elementary	Structural Seismic Upgrade - Block 1 (H1), Substructure Upgrade - Both Blocks	H1	2030	\$40,410,000	
	Daniel Woodward Elementary	Structural Seismic Upgrade - Blocks 1 & 2 (H1), Substructure Upgrade - All 3 Blocks	H1	2030	\$47,594,000	
	Kingswood Elementary	Structural Seismic Upgrade - Blocks 1 & 3 (H3)	H3	2030	\$25,896,000	
20	Alexander Kilgour Elementary	Structural Seismic Upgrade - Block 1 (H1) & Block 4 (H2)	H1	2031	\$14,906,000	\$153,262,000
21	Tomekichi Homma Elementary	Structural Seismic Upgrade - Block 1 (H2), Substructure Upgrade - Both Blocks	H2	2031	\$59,546,000	
22	Kathleen McNeely Elementary	Structural Seismic Upgrade - Block 1 (H3), Substructure Upgrade - Both Blocks	H3	2031	\$49,516,000	
23	Sea Island Elementary	Structural Seismic Upgrade - Block 1 (H2), Substructure Upgrade - Both Blocks	H1	2031	\$29,294,000	

2026/27 FIVE-YEAR CAPITAL PLAN
Richmond School District #38

24 June 2025

EXPANSION PROGRAM (EXP) PROJECTS					
Priority	Facility Name	Project Description	Year (Planning)	Total (Capital Plan)	Program Total
New Schools/Additions to Schools					
1	City Centre East Elementary	New 40K/300E Elementary School - City Centre Area population growth (City Centre East)	2026	\$54,170,000	\$166,003,000
2	Hamilton Elementary	0K/150E Addition (80K/500E total) - Hamilton Area population growth	2026	\$24,423,000	
3	City Centre Elementary	New 60K/525E Elementary School - City Centre Area population growth (City Centre West)	2029	\$87,410,000	
Site Acquisitions					
1	City Centre Elementary Site	0.9 Hectare Parcel - City Centre Area (City Centre West)	2028	\$30,000,000 Refer to ESSP	

June 4, 2025

Select Standing Committee on Finance and
Government Services
c/o Parliamentary Committees Office
Room 224, Parliament Buildings
Victoria, B.C. V8V 1X4

Dear Committee Members,

Thank you for the opportunity to present the Richmond Board of Education's key priorities for the upcoming provincial budget. This submission reflects the united voice of the Board and our education partners in the Richmond community, including Richmond Teachers' Association, CUPE Local 716, Richmond District Parents Association, Richmond Association of School Administrators, and Richmond Management and Professional Staff. Together, we remain steadfast in our shared commitment to the success of every student in the Richmond School District.

Our priorities for Budget 2026 focus on three critical areas that require immediate and sustained attention:

1. Capital Funding for a New School in Richmond City Centre

The Richmond Board of Education has been consistently advocating for the construction of two new elementary schools in the city centre to address rapid population growth. This area continues to experience sustained development, driven by high density housing and a significant influx of young families.

After several years of sustained effort, the board continues to work diligently toward securing a school site in the high growth area. This work reflects our strong commitment to addressing the urgent need for expanded public education infrastructure in Richmond. However, it is important to note that enrolment growth continues to outpace infrastructure.

To adequately serve the ongoing and projected student population, a second new school remains necessary to ensure students in the city centre have access to neighbourhood schools and appropriate learning environments.

We look forward to ongoing collaboration with the province to ensure capital investments align with community needs and provide the foundation for long-term student success.

2. Continued Investment in the Seismic Mitigation Program

The Richmond School District faces an acute need for capital funding to complete the seismic mitigation program. Currently, 22 schools in our district, 18 elementary and four secondary schools, have been identified with high seismic risk rating. This translates to over 10,000 student seats requiring seismic mitigation measures.

The health, safety and well-being of our students and staff must remain a top priority. Timely investment in seismic upgrades is critical to maintaining safe learning environments and fulfilling the government's commitment to public safety and infrastructure resilience.

3. Stable and Sustainable Education Funding

We respectfully call on the province to commit to stable and sustainable funding for public education, an essential pillar of our democratic society. Reliable funding is fundamental not only for supporting student success, but also for implementing Ministry initiatives, including Early Learning and Childcare programs.

School districts continue to face significant structural and unfunded cost pressures. The current funding model does not account for increases in employee benefit costs or salary grid increments, placing strain on operating budgets. These pressures are further exacerbated by inflation and cost escalation caused by global economic volatility.

While the district continues to exercise fiscal responsibility through prudent budgeting, strategic procurement and long-term planning, these measures alone are insufficient to maintain service levels without predictable and adequate funding. Sustainable funding is essential to preserve the quality, accessibility and inclusivity of public education in British Columbia.

Conclusion

As we look ahead to Budget 2026, the Richmond Board of Education reaffirms its commitment to working in partnership with our partners and the provincial government. We believe that through collaboration, targeted investment, and shared responsibility, we can ensure that every student in Richmond has access to strong, inclusive, and equitable public education.

We thank you for your attention to these priorities and look forward to continuing this important dialogue.

Sincerely,

Ken Hamaguchi, Chairperson
On behalf of the Board of Education (Richmond)

cc: Minister of Education and Child Care
Minister of Infrastructure
Trustees, School District No. 38 Richmond
Superintendent of Schools, School District No. 38 Richmond
Secretary Treasurer, School District No. 38 Richmond